

CERTIFICATE



Management system as per EN ISO 14001:2015

In accordance with TÜV AUSTRIA CERT procedures, it is hereby certified that

DIETSMANN S.R.L.

Headquarter:

1B Pipera Blvd., Cubic Center, Office Building
SB5.04 Space, 1st Office
RO 077190, Voluntari, Ifov County

Work sites:

72 Crinului Street, „Administrative Offices” Building
RO 417535, Suplacu de Barcău, Bihor County
FN Abrămuț Street
RO 417015, Abrămuț, Bihor County

Romania

applies a management system in line with the above standard for the following scope

Construction-assembly, maintenance and transport for the chemical, petrochemical, extraction and production of oil and gases industry

Certificate Registration No. 20104151416079

Valid until 2024-02-03

Initial certification 2015-02-04

Certification Body
at TÜV AUSTRIA CERT GMBH

Vienna, 2021-04-09

This certification was conducted in accordance with TÜV AUSTRIA CERT auditing and certification procedures and is subject to regular surveillance audits.

TÜV AUSTRIA CERT GMBH Deutschstraße 10 A-1230 Wien www.tuv.at

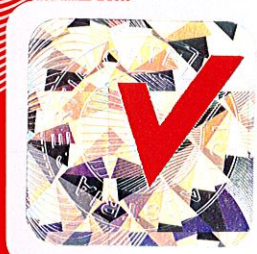


Online Verification



www.tuv.at/certcheck

ZERTIFIKAT | CERTIFICATE | CERTIFICAT | CERTIFICADO | СЕРТИФИКАТ | شهادة | 证书 | 인증서



Annex to the Certificate No. 20104151416079

Scope

Construction-assembly, maintenance and transport for the chemical, petrochemical, extraction and production of oil and gases industry, for the following activities:

- the execution of the upstream supply pipes and of the surface technological installations related to the natural gas storage, EPI type
- execution of installations for the use of natural gas with medium-, low- and low-pressure regime, EDIB type
- tests of electrical equipment and installations, A type
- design and execution of exterior / interior electrical installations for enclosures / civil and industrial constructions, aerial and underground connections, at the nominal voltage of 0.4 kV, B type
- design of power lines, overhead or underground, with rated voltages of 0.4 kV ÷ 20 kV and transformer stations with a maximum rated voltage of not more than 20 kV, C1A type
- execution of electric lines, overhead or underground, with nominal voltages of 0.4 kV ÷ 20 kV and transformer stations with a maximum rated voltage of not more than 20 kV, C2A type
- execution of power stations and works on the electrical part of power plants, E2 type
- execution of painting works for the support elements of the electrical networks / deforestation for the passage corridor of overhead power lines, F type
- execution of works (installation, commissioning, repair and maintenance) in technical installations operating in potentially explosive atmospheres
- carrying out maintenance work on pressure installations, lifting installations and fuel-consuming appliances
- installation and maintenance of fire alarm systems and extinguishing
- road transport of goods
- ITP repair and inspection works

Certification Body
at TÜV AUSTRIA CERT GMBH

Vienna, 2021-04-09



Online Verification



www.tuv.at/certcheck